

Examples of key conditions in different skin tones

Supplementary material to:
Hutchison E, Yoseph R, Wainman H. Skin of colour: essentials for the non-dermatologist.
Clin Med 2023;23:2–8.

Venous eczema



Lipodermatosclerosis in SOC (middle)

Atopic dermatitis



Extensor surface involvement (middle) and discoid eczema (bottom): common distribution patterns of atopic dermatitis in SOC

Eczema herpeticum



Psoriasis



Melanoma



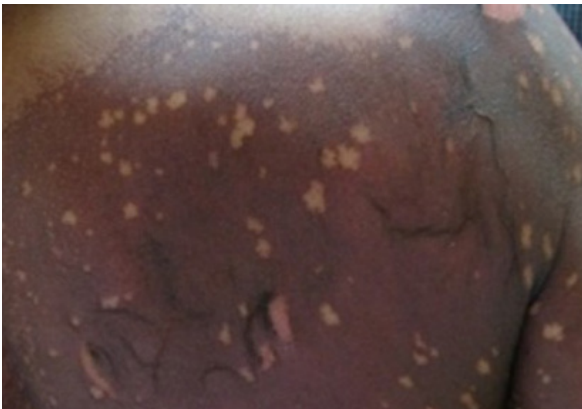
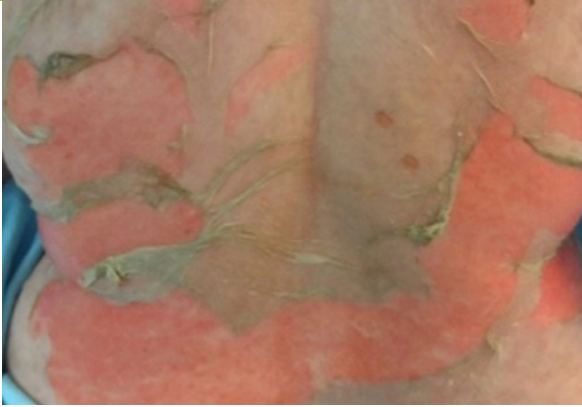
Nodular melanoma (top):
more common in white skin

Acral lentiginous melanoma (middle) and (bottom): *most common subtype in skin of colour*

Morbilliform drug eruption



Stevens-Johnson syndrome/toxic epidermal necrolysis



Hyperpigmentation



Post-inflammatory hyperpigmentation following lichen planus (top and bottom)

Keloid scar



Thanks to Global Skin Atlas (globalskinatlas.com) and Gloucestershire Hospitals NHS Foundation Trust for permission to use these images.