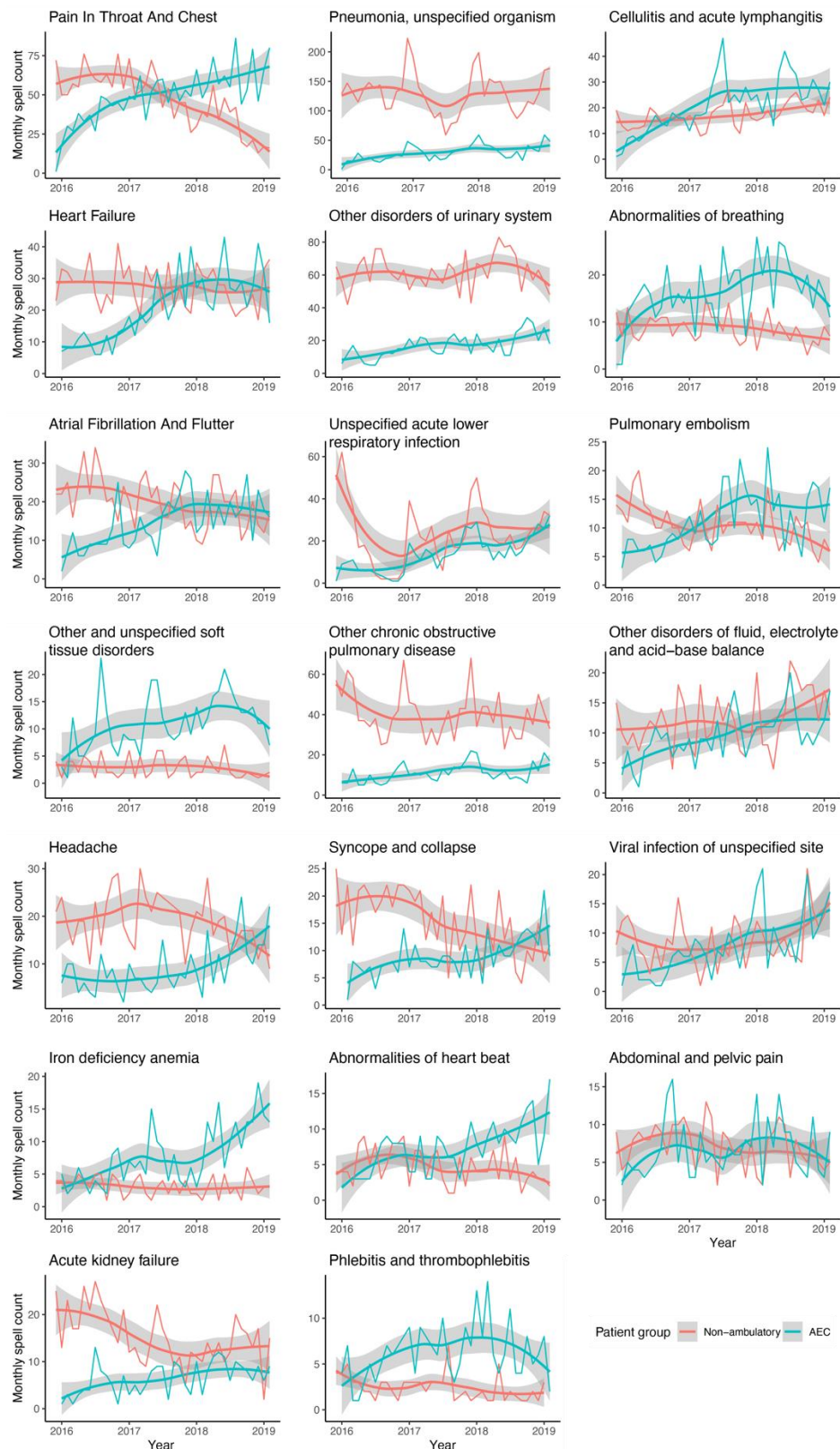
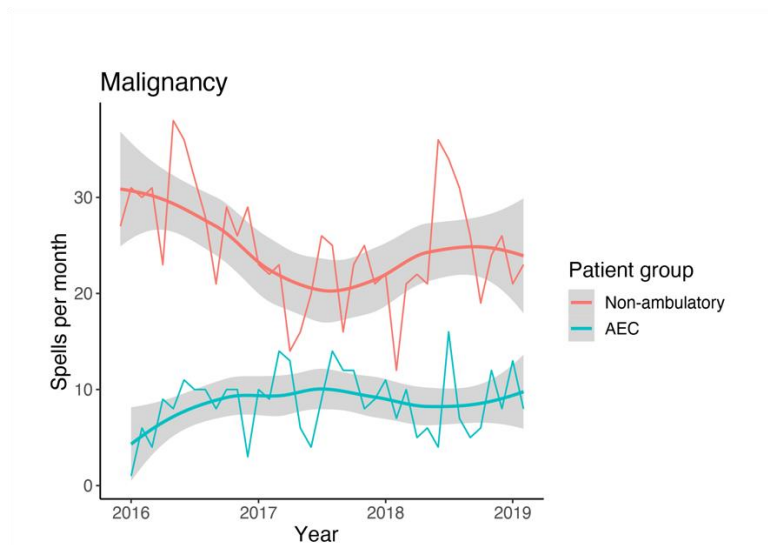


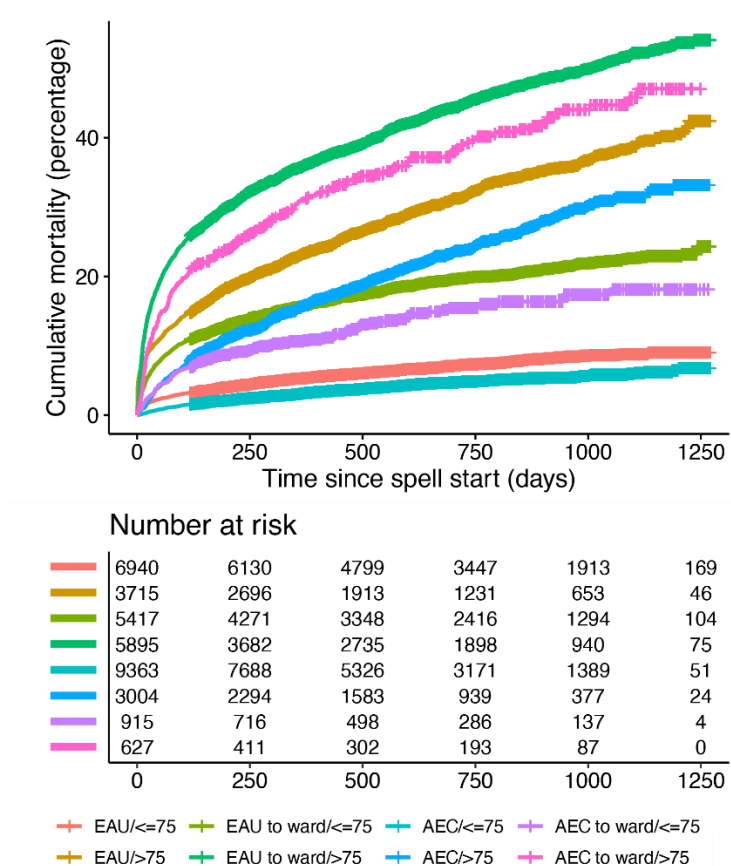
## Supplementary material S2 – Figures S1–S3



**Supplementary Fig S1. Patient spells per month on AEC or the non-ambulatory pathway for the 20 most common AEC ICD-10 diagnoses.**



**Supplementary Fig S2. Patient spells per month with a primary diagnosis of cancer.**



**Supplementary Fig S3. Cumulative mortality in AEC and non-ambulatory pathway patients (EAU), following the opening of AEC, stratified by age, whether admitted to an inpatient bed ('to ward') and whether admitted from AEC or the non-ambulatory pathway.**